

8

THIS DRAWING IS THE PROPERTY OF ANALOG DEVICES INC. IT IS NOT TO BE REPRODUCED OR COPIED, IN WHOLE OR IN PART, OR USED IN FURNISHING INFORMATION TO OTHERS, OR FOR ANY OTHER PURPOSE DETRIMENTAL TO THE INTERESTS OF ANALOG DEVICES. THE EQUIPMENT SHOWN HEREON MAY BE PROTECTED BY PATENTS OWNED OR CONTROLLED BY ANALOG DEVICES.

RELAY CONTROL CHART

CONTROL	CODE	DEVICE	FUNCTION	CONNECTOR

7

6

5

JUMPER TABLE

JP#	ON	OFF
1		
2		
3		
4		
5		

* SEE ASSEMBLY INSTRUCTIONS

4

3

2

REVISIONS

REV	DESCRIPTION	DATE	APPROVED
A	INITIAL RELEASE	25NOV21	A. UY
B	AS PER ECR-109978	08NOV22	A. UY

1

EVAL-CN0575-RPIZ

10BASE-T1L FIELD DEVICE DEVELOPMENT PLATFORM
WITH POWER OVER DATA LINES (PODL) FOR RASPBERRY PI

SHEET 1 : FRONT PAGE

SHEET 2 : CABLE CONNECTION AND POWER COUPLING

SHEET 3 : LTC9111 POWER OVER DATA LINE (PODL) PD CONTROLLER

SHEET 4 : LT8304 ISOLATED FLYBACK CONVERTER

SHEET 5 : ADIN1110 10BASE-T1L ETHERNET MAC-PHY

SHEET 6 : RASPBERRY PI CONNECTIONS AND ADT75 TEMPERATURE SENSOR

P.O SPEC.	BK/BD SPEC.	SOCKET OEM	OEM PART#	HANDLER

8

7

6

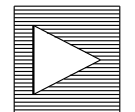
5

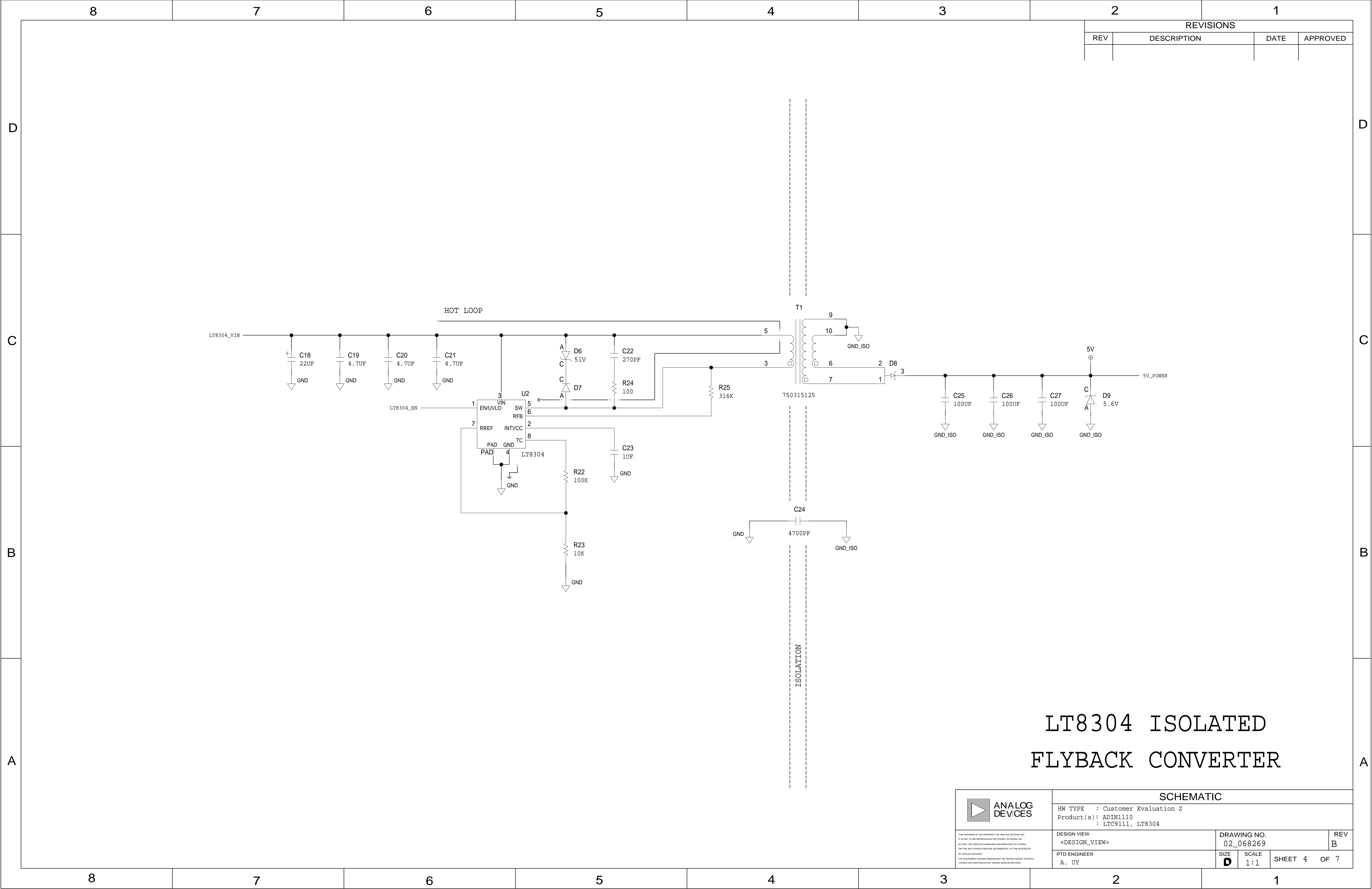
4

3

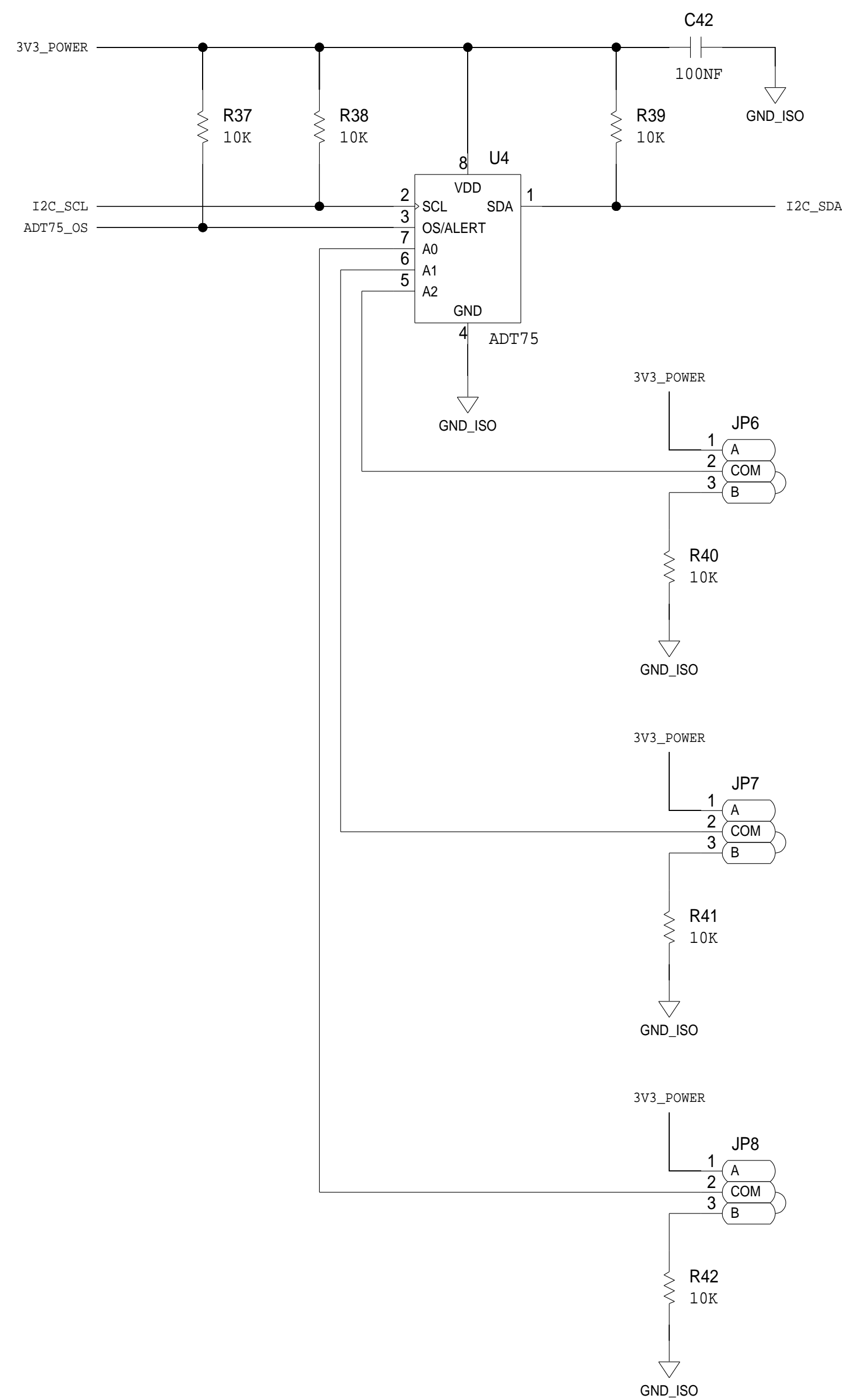
2

1

TEMPLATE ENGINEER -	DATE	SCHEMATIC		 ANALOG DEVICES				
HARDWARE SERVICES M. VALE	25NOV21							
HARDWARE SYSTEMS -		HW TYPE : Customer Evaluation Z Product(s): ADIN1110 : LTC9111, LT8304 PACKAGE : LeadCount-lead BodySize PackageType-family : Pitch-pitch StyleVendor Style <User Define> <User Define> <User Define>						
TEST ENGINEER -								
COMPONENT ENGINEER N. BUENAFLO	25NOV21							
TEST PROCESS -								
HARDWARE RELEASE K. JABATAN	25NOV21							
DESIGNER S. DE CASTRO	25NOV21	MASTER PROJECT TEMPLATE TBD	TESTER TEMPLATE 067706_a	DRAWING NO. 02_068269	REV. B			
PTD ENGINEER A. UY	25NOV21	UNLESS OTHERWISE SPECIFIED DIMENSIONS ARE IN INCHES TOLERANCES DECIMALS X.XX +0.010 X.XXX +0.005						
CHECKER -		FRACTIONS +1/32		ANGLES +2	SIZE D	SCALE 1:1	CODE ID NO. CodeID	SHEET 1 OF 7

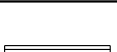


REVISIONS			
REV	DESCRIPTION	DATE	APPROVED



JP6 Setting	JP7 Setting	JP8 Setting	I ² C Address
GND	GND	GND	0x48 (Default)
GND	GND	3.3V	0x49
GND	3.3V	GND	0x4A
GND	3.3V	3.3V	0x4B
3.3V	GND	GND	0x4C
3.3V	GND	3.3V	0x4D
3.3V	3.3V	GND	0x4E
3.3V	3.3V	3.3V	0x4F

ADT75 TEMP SENSOR

 ANALOG DEVICES	<h1 style="text-align: center;">SCHEMATIC</h1>				
	HW TYPE : Customer Evaluation Z Product(s) : ADIN1110 : LTC9111, LTC3014				
<small>THIS DRAWING IS THE PROPERTY OF ANALOG DEVICES INC. IT IS NOT TO BE REPRODUCED OR COPIED, IN WHOLE OR IN PART, OR USED IN FURNISHING INFORMATION TO OTHERS, OR FOR ANY OTHER PURPOSE WITHOUT PERMISSION, IN THE FORM OF A LETTER, FROM ANALOG DEVICES. THE INFORMATION SHOWN HEREIN MAY BE PROTECTED BY PATENTS OWNED OR CONTROLLED BY ANALOG DEVICES.</small>	DESIGN VIEW <DESIGN_VIEW>		DRAWING NO. 02_068269		REV B
	PTD ENGINEER A. UY		SIZE D	SCALE 1:1	SHEET 6 OF 7

